



THE
ACOUSTICS
COMPANY

ETCH

Wall Covering



PRODUCT INFO

Etch is a meticulously crafted collection that harnesses the full acoustic performance of our Alpha Panel, made from recycled PET. This range showcases a variety of inspirations reflected in bold and daring patterns, elevating any interior space to a modern and contemporary splendour.

Etch is available in various design techniques, allowing you to enjoy the simplicity of our grooves, double-layer grooves, or even customised panel printing. Revel in the sophistication and elegance of our unique Alpha Panel designs, which offer exceptional acoustic performance.

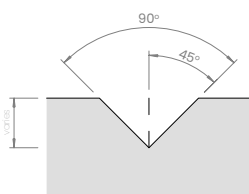
ETCH DUO

Etch is available with a sophisticated dual-tone finish, allowing you to highlight your design with contrasting colours for the face and back panels. This feature makes your Etch design stand out, adding depth and dimension to the overall aesthetic.

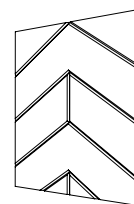
The Etch Duo collection is perfect for creating a refined, elevated atmosphere in any room, enhancing the visual impact of your space while maintaining superior acoustic performance. The face panel is upholstered in Camira Sonus fabric, offering a range of colours to complement your design while ensuring a high-quality finish. Transform your interiors with the perfect combination of style and sound.

DETAILS

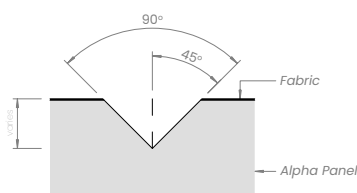
STANDARD ETCH
(ALPHA)



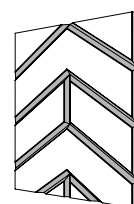
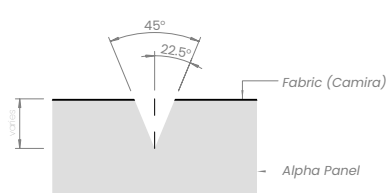
ETCH
(ALPHA)



ETCH DUO
(FABRIC x ALPHA)

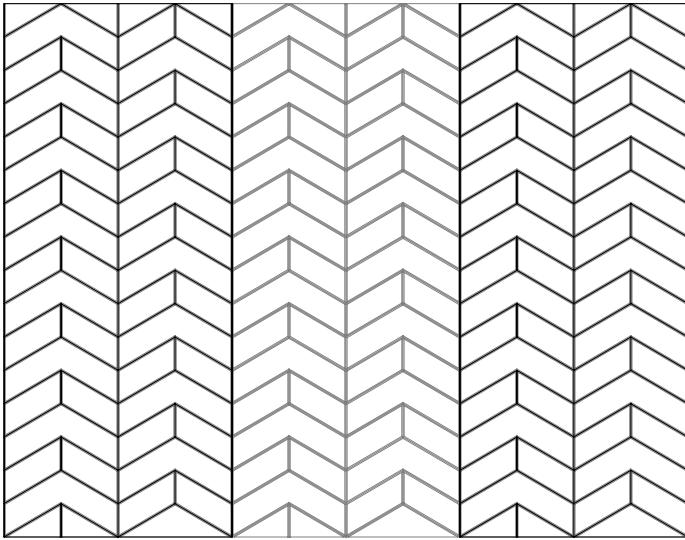


ETCH DUO
(SONUS x ALPHA)

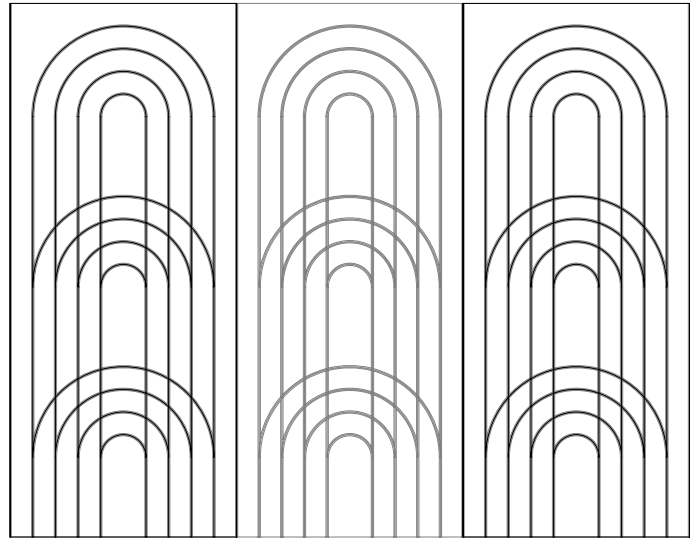


ETCH DESIGNS

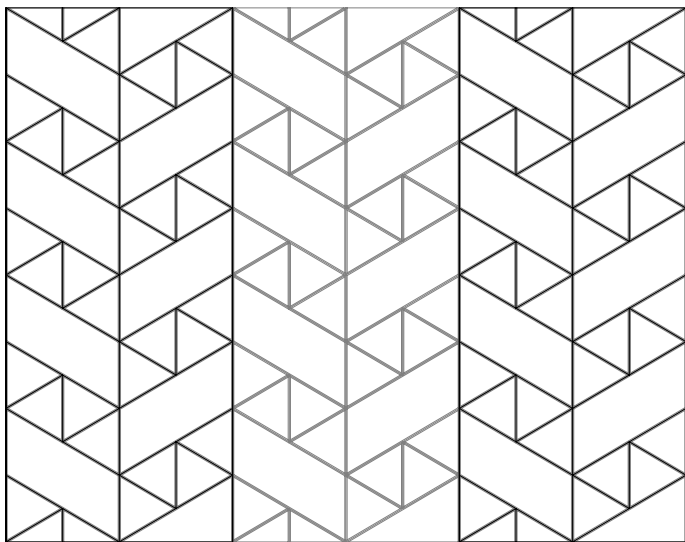
Versatile textured acoustic wall covering with 20 different contemporary etched designs available for use.



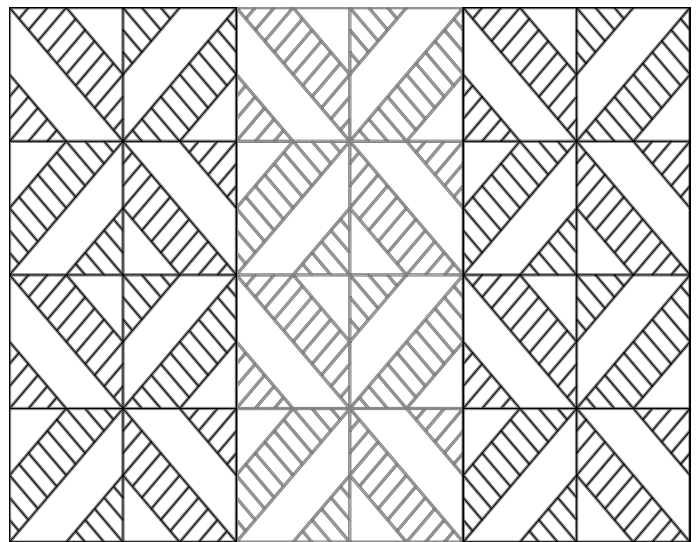
APEX



ARCHES



BRAID

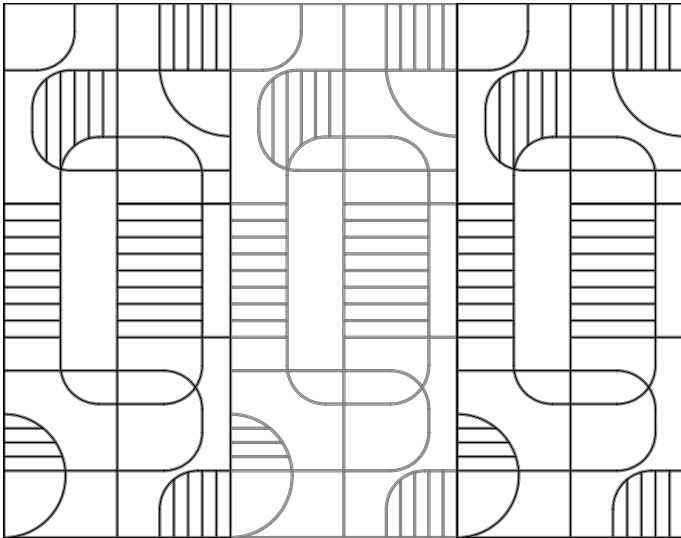


CERAMIC

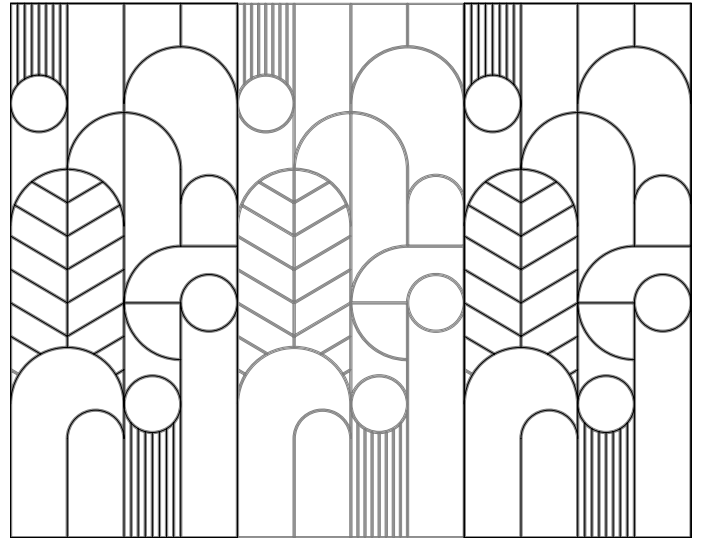
PRODUCT	ARTICLE	DIMENSION	THICKNESS
Apex	04WTETC-APE000	2780mm x 1180mm	12mm/24mm
Arches	04WTETC-ARC000	2780mm x 1180mm	12mm/24mm
Braid	04WTETC-BRA000	2780mm x 1180mm	12mm/24mm
Ceramic	04WTETC-CER000	2780mm x 1180mm	12mm/24mm

For more information contact us at
sales@acousticscompany.com

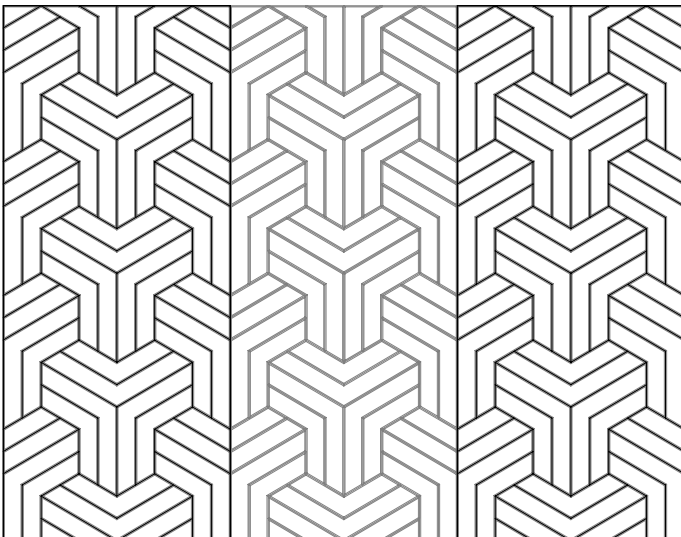
ETCH DESIGNS



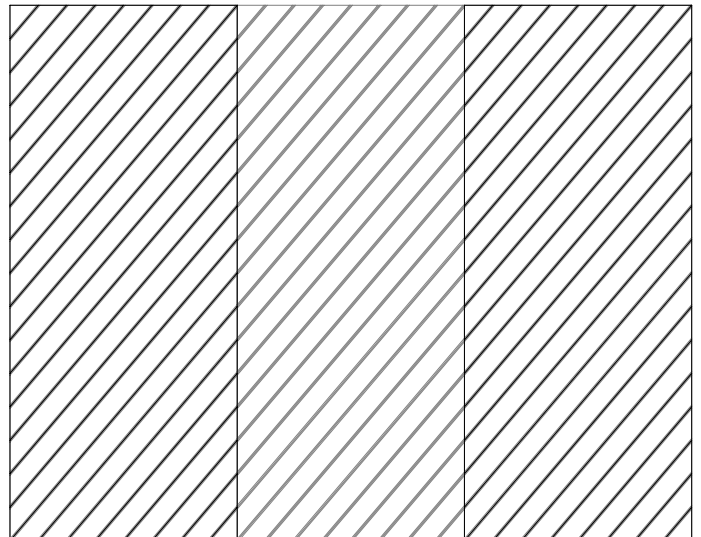
COLLAGE



DECO



DELTA

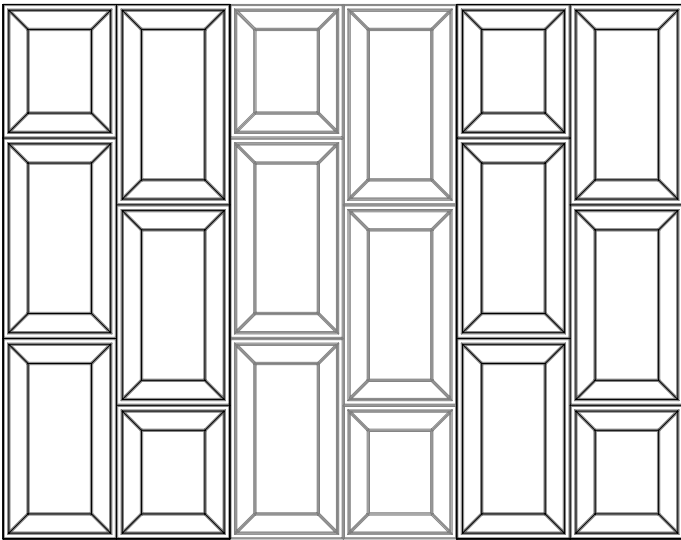


DIAGONAL

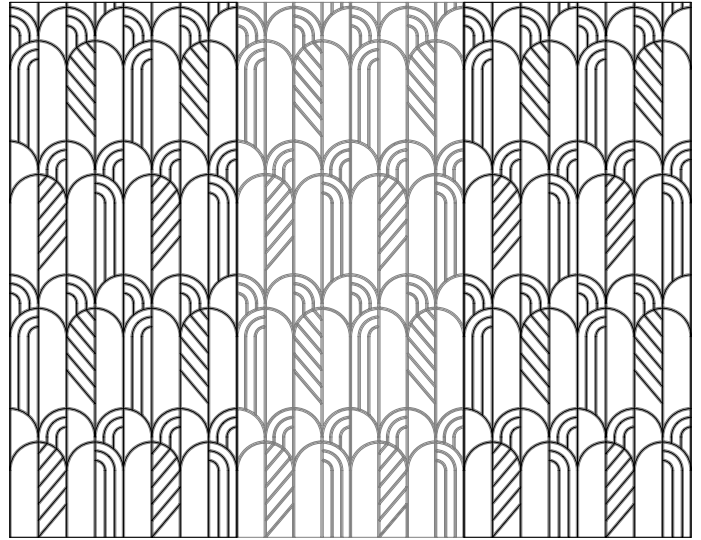
PRODUCT	ARTICLE	DIMENSION	THICKNESS
Collage	04WTETC-COL000	2780mm x 1180mm	12mm/24mm
Deco	04WTETC-DEC000	2780mm x 1180mm	12mm/24mm
Delta	04WTETC-DEL000	2780mm x 1180mm	12mm/24mm
Diagonal	04WTETC-DIA000	2780mm x 1180mm	12mm/24mm

For more information contact us at
sales@acousticscompany.com

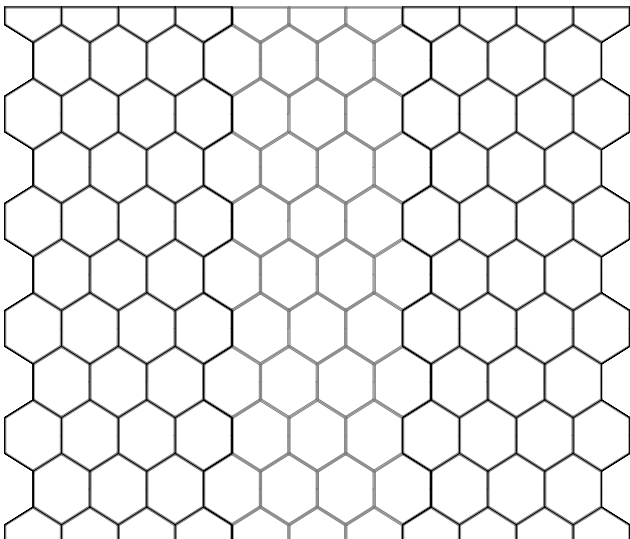
ETCH DESIGNS



GEM



HILLSCAPE



HONEYCOMB

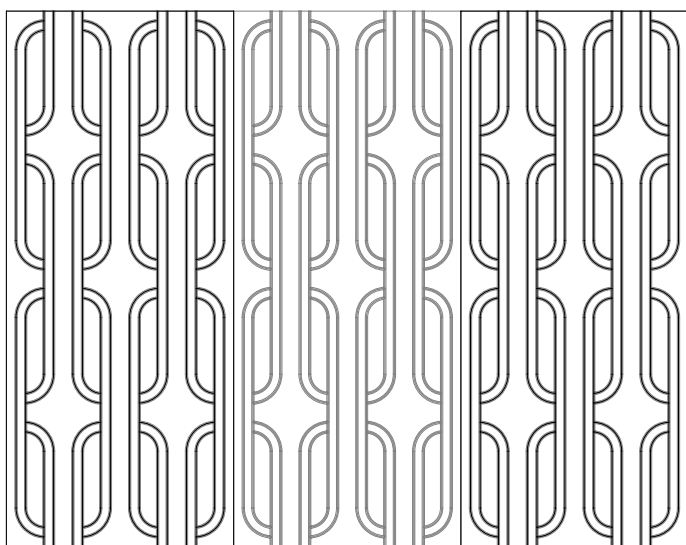


HORIZONTAL

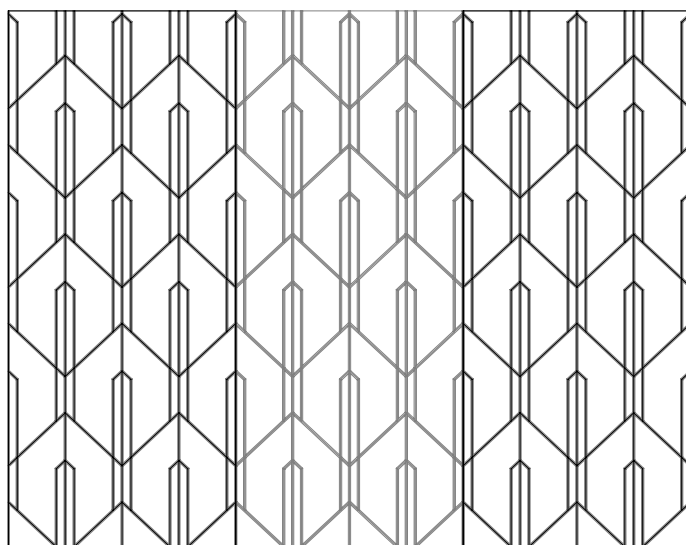
PRODUCT	ARTICLE	DIMENSION	THICKNESS
Gem	04WTETC-GEM000	2780mm x 1180mm	12mm/24mm
Hillscap	04WTETC-HIL000	2780mm x 1180mm	12mm/24mm
Honeycomb	04WTETC-HON000	2780mm x 1180mm	12mm/24mm
Horizontal	04WTETC-HOR000	2780mm x 1180mm	12mm/24mm

For more information contact us at
sales@acousticscompany.com

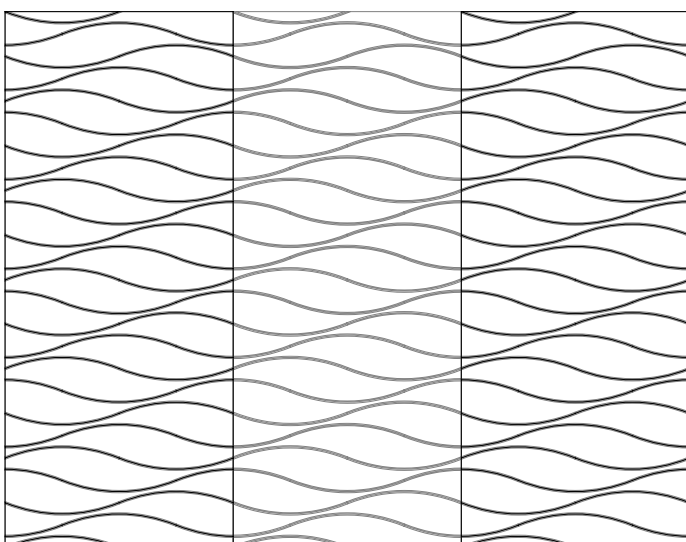
ETCH DESIGNS



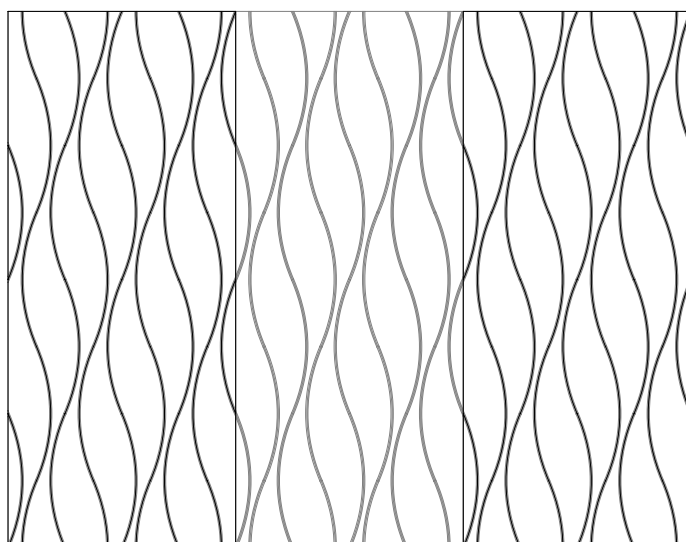
LACE



LIGHTHOUSE



SERENE (HORIZONTAL)

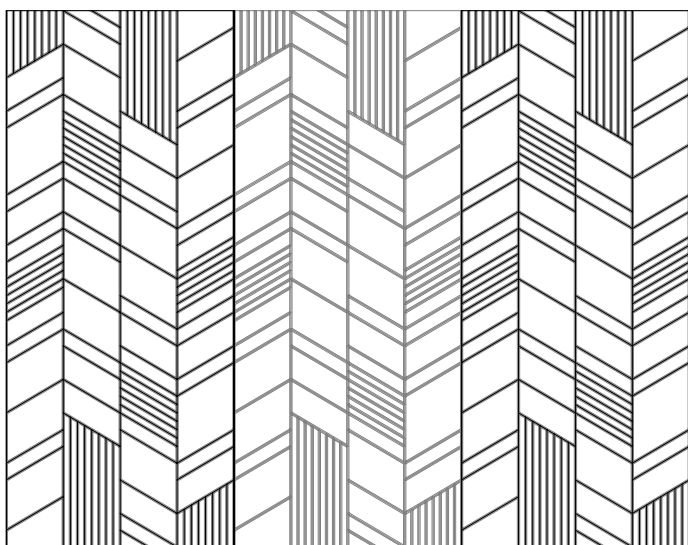


SERENE (VERTICAL)

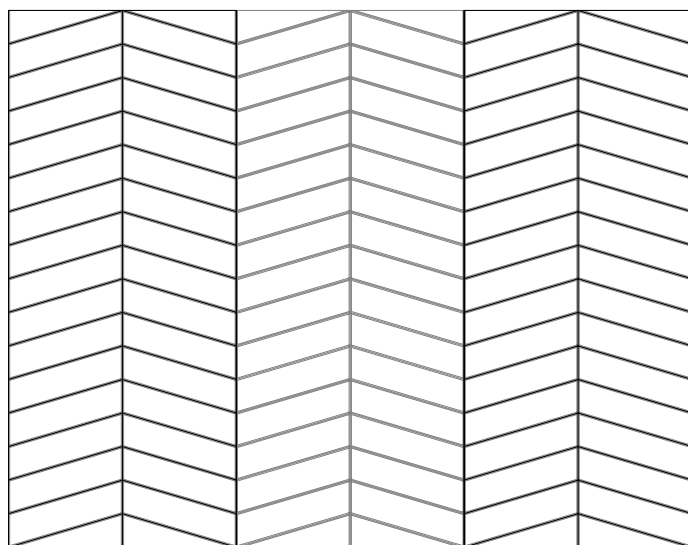
PRODUCT	ARTICLE	DIMENSION	THICKNESS
Lace	04WTETC-LAC000	2780mm x 1180mm	12mm/24mm
Lighthouse	04WTETC-LIG000	2780mm x 1180mm	12mm/24mm
Serene (H)	04WTETC-SHL000	2780mm x 1180mm	12mm/24mm
Serene (V)	04WTETC-SVL000	2780mm x 1180mm	12mm/24mm

For more information contact us at
sales@acousticscompany.com

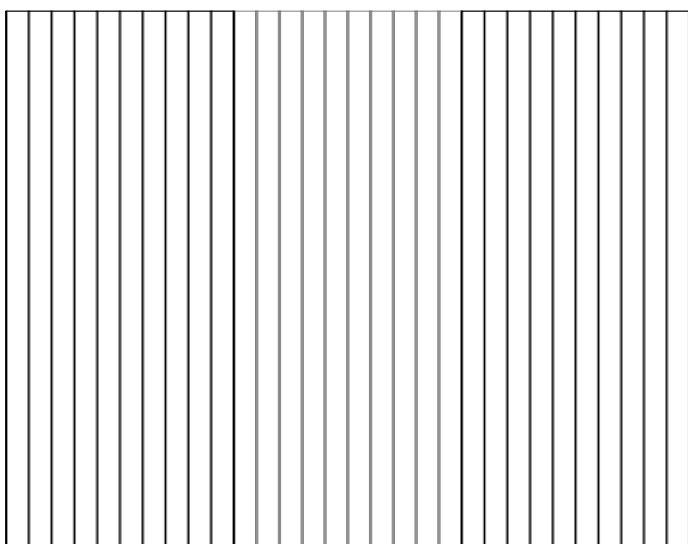
ETCH DESIGNS



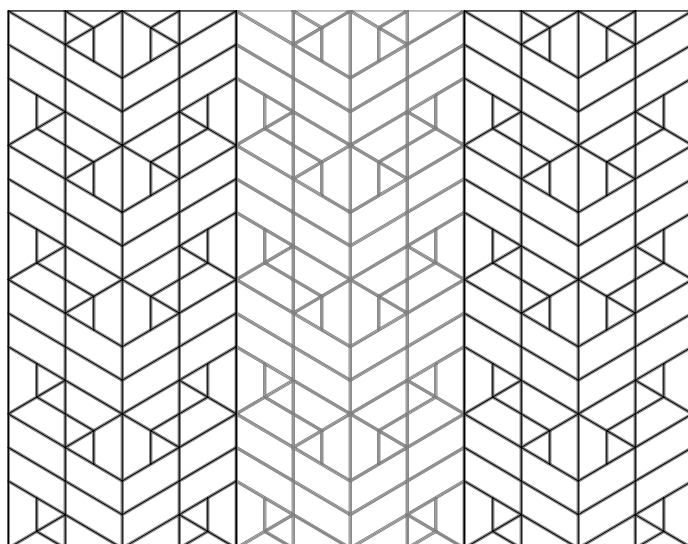
SHIFT



SYNERGY



VERTICAL



VORTEX

PRODUCT	ARTICLE	DIMENSION	THICKNESS
Shift	04WTETC-SHI000	2780mm x 1180mm	12mm/24mm
Synergy	04WTETC-SYN000	2780mm x 1180mm	12mm/24mm
Vertical	04WTWCG-VER007	2780mm x 1180mm	12mm/24mm
Vortex	04WTWCG-VOR007	2780mm x 1180mm	12mm/24mm

For more information contact us at
sales@acousticscompany.com

MATERIAL INFORMATION

COMPOSITION:	75% Recycled PET Fibre 25% Virgin Fibre
FIRE RATING:	12mm EN13501-1:2007+A1:2009 B - S1, D0 24mm EN13501-1:2007+A1:2009 B - S2, D0
DENSITY:	2.4kg/m ² (12mm) / 3.8kg/m ² (24mm)
ACOUSTICS:	Class A, C, and D Absorber

*Our Alpha panels have a Thickness Tolerance of ± 1 mm and a Length & Width Tolerance of ± 3 mm



FINISHES

Etch is made with high quality recycled PET panels. The selection has different colours that would compliment any interior space and concept. See finishes on the following links:



Finishes

Scan the code or visit
www.acousticscompany.com/finishes



Catalogue

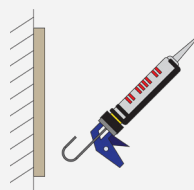
Scan the code or visit
<https://acousticscompany.com/wp-content/uploads/2025/07/PRODUCT-BROCHURE-2025.pdf>

INSTALLATION

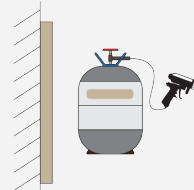
The Acoustics Company cater for all project budgets and have multiple fixing methods.

Etch wall covering can be installed using the following method:

DIRECT FIX USING Soudal Fix All (Hightack)



DIRECT FIX USING CONTACT ADHESIVE



DESIGN TIPS

Here are some tips to help you fully realise the potential of our Etch products:

1. Experiment with Colours and Finishes: Explore various colours and finishes for the PET panels to enhance and complement the etched patterns, ensuring a harmonious blend with the interior design.
2. Panel Thickness Counts: Choose the right panel thickness based on the desired balance between durability and visual impact, as thicker panels can add depth to the etched designs.
3. Highlight Sophistication with Etch Duo: Etch Duo is perfect for creating sophisticated wall patterns, adding an extra layer of elegance to interior spaces.
4. Plan for Practical Needs: Account for the placement of electrical outlets or access points during

ACOUSTIC PERFORMANCE

The acoustic performance of materials refers to their ability to absorb, reflect, or transmit sound waves. This concept is crucial in architecture, interior design, and engineering, as it determines how sound behaves in a space. Materials with good acoustic performance can reduce noise levels, improve speech intelligibility, and create more comfortable and functional environments by controlling reverberation and sound transmission.

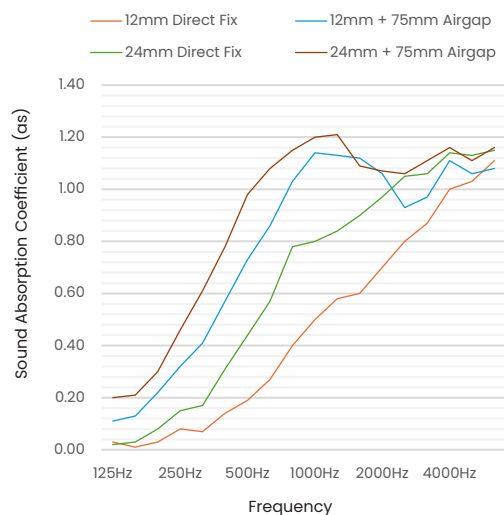
TESTING STANDARDS

ISO 354	Measurement of sound absorption in a reverberation room
ISO 11654	Sound absorbers for use in buildings – Rating of sound absorption
ASTM C423-17	Standard Test Method for Sound Absorption and Sound Absorption Coefficients by the Reverberation Room Method
ACOUSTICS:	Sound absorbers for use in buildings – Rating of sound absorption

ACOUSTICALLY TESTED ETCH	aw	NRC	CLASS
12mm Direct Fix	0.35(H)	0.45	D
12mm + 75mm Airgap	0.75(MH)	0.85	C
24mm Direct Fix	0.50(MH)	0.65	D
24mm + 75mm Airgap	0.90	1.00	A

For aw, it is strongly recommended to use this single- number rating in combination with the complete sound absorption curve that can be obtained on request

FREQUENCY (Hz)	125	250	500	1000	2000	4000
12mm Direct Fix	0.00	0.10	0.30	0.55	0.80	1.00
12mm + 75mm Airgap	0.15	0.45	0.85	1.00	1.00	1.00
24mm Direct Fix	0.05	0.20	0.60	0.85	1.00	1.00
24mm + 75mm Airgap	0.25	0.60	1.00	1.00	1.00	1.00



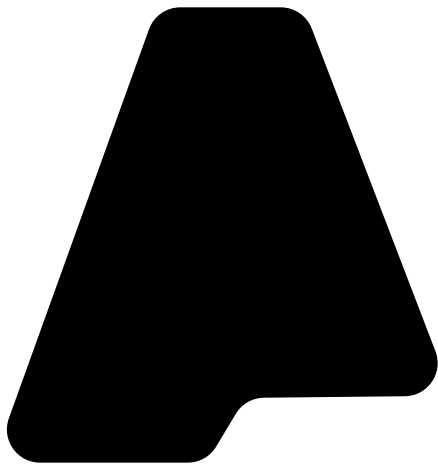
Weighted Sound Absorption Coefficient (aw) - Measured in accordance with ISO 11654. Practical sound absorption coefficient ap values at given standard frequencies are compared with reference curve aw.

Noise Reduction Coefficient (NRC) - The mean average as value at frequencies 250, 500, 1000 and 2000 Hz.

Absorption Class - Levels of comparison of absorption values against a reference curve with A as highest and E as lowest. Measured in accordance with ISO 11654.

Practical Sound Absorption Coefficient (ap) - The average of the three as values centered on the 1/3 octave band center frequency, measured in accordance with EN ISO 354.

Note: The sound absorption values provided in this product sheet are subject to change without prior notice from The Acoustics Company. For the most current and accurate technical specifications, please contact our Sales Team directly.



THE **ACOUSTICS** COMPANY



 www.acousticscompany.com    [@theacousticscompany](https://www.instagram.com/theacousticscompany)

#ResonateBliss